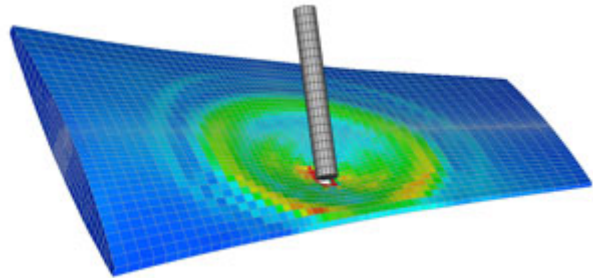


NEi Software to Demonstrate Simulation of Impact Damage to Composite Structures at SAMPE 2009 Fall Technical Conference

Westminster, CA. 28 September 2009 - NEi Software (NEi) will demonstrate simulation of impact damage at the Society for the Advancement of Material and Process Engineering (SAMPE) Fall Technical Conference in Wichita, Kansas. The presentation, entitled "Simulating Impact Damage to Composite Structures" will be conducted by Allan Hsu during the "Design and Analysis of Composite Structures II" session on Tuesday, October 20th. It will explore how designers use [Progressive Ply Failure Analysis](#) (PPFA™) and Impact Analysis to mitigate the risk of catastrophic failure due to impact damage with composite structures.

NEi Software, a global leader in the development of Finite Element Analysis (FEA) and engineering simulation software, will demonstrate the features of its simulation technology at booth #811. [NEi Nastran](#), the company's flagship product, provides full support of [composite analysis](#), not only with PPFA, but also with features such as:



- Advanced Failure Criteria which use NASA Langley's LARC02 and Puck's first-ply-failure criteria
- 3D Composite Elements which permits 2D parameters to be extended to 3D or direct 3D orthotropic entry
- Determination of ply delaminations by using 3D Composite Elements
- Stability Index for sandwich structures reveals facesheet failure modes of wrinkling, dimpling and crimping

About NEi Software

NEi Software is a world leader in Nastran Finite Element Analysis (FEA), engineering simulation, and virtual test software. Engineers gain insight with digital prototypes, images, contour plots, graphs, and animations of linear and nonlinear structural stress, deformation, dynamics, vibration, kinematics, impact, heat transfer and fluid dynamic (CFD) simulations. The website features case studies in aerospace, automotive, maritime, petroleum, medical, and consumer products with demonstration videos, webinars, tutorials, class schedules, and options for evaluation. Website: www.NEiSoftware.com | Telephone: 714.899.1220 | Email: info@neisoftware.com

Marketing Contact:

Tom Eidukonis | NEi Software

Telephone: 714.899.1220 Ext. 206 | Email: tom.eidukonis@neisoftware.com