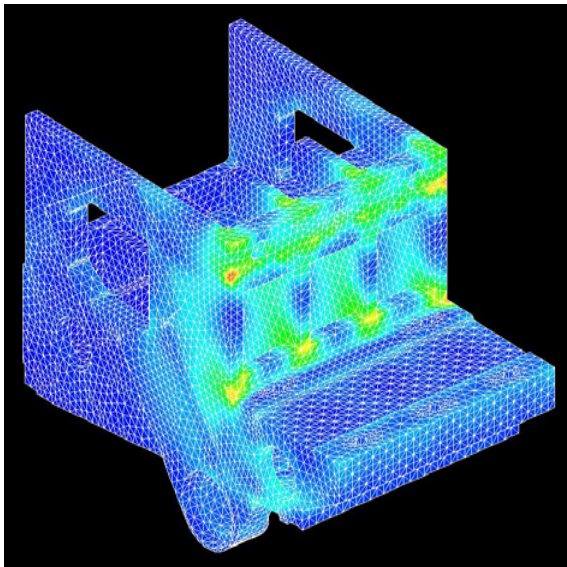


NEiNastran

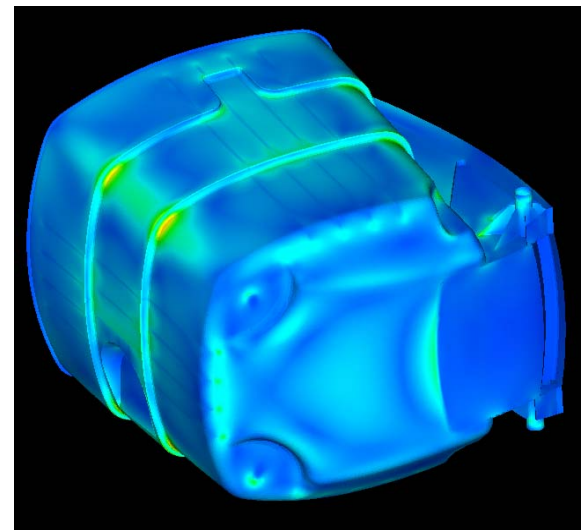
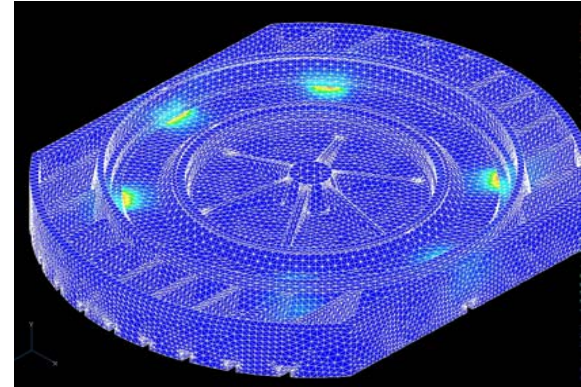
Industrial Applications (Tooling and Manufacturing Equipment)



Bergomat Maschinenbau GmbH & Co. used NEiNastran to design and analyze this tooling machine housing (left), which is a major component of a multi functional tooling center. Several designs were compared under similar loading and constraints using linear static analysis.

NEiNastran was used by Deckel Maho GmbH to design and analyze this table for a NC tooling machine (top right). The geometry was defined as molded part in Pro/E, imported via STEP into the NEiNastran Modeler, and analyzed using the NEiNastran solver. The contour plot depicts a load case where the table is locked with a clamping mechanism so milling is possible.

Klaus Kunststofftechnik GmbH used NEiNastran to analyze this fiber reinforced Polypropylene bottle (lower right) for an industrial vacuum cleaner. The bottle is loaded with a 220 mbar vacuum and 32 kg of simulated filling (stone dust). The initial conception was optimized to reduce stress concentrations.



Noran Engineering, Inc is aggressively focused on commitment to the customer. Detailed documentation, customized on-site training, and comprehensive technical support ensures that you will see immediate return on your investment.

For more information about our company or our products, please contact:

Headquarters:

Noran Engineering, Inc

5555 Garden Grove Blvd., Suite 300

Westminster, CA 92683-1886

USA

Phone: 1.714.899.1220

Fax: 1.714.899.1369

Email: info@noraneng.com

Website: www.NENastran.com

Europe:

SmartCAE

Piazza della Gualchierina, 9

59100 Prato

ITALY

Phone: +39.0.574.404.642

Fax: +39.0.574.401.265

E-mail: info@smartcae.com

Website: www.smartcae.com

Asia/Pacific:

Digital Solutions

Kyoei Nakasuji Bldg., 3-7-18

Nakasuji, Asaminami-ku

Hiroshima 731-0122

JAPAN

Phone: +81.82.831.1190

Fax: +81.82.831.1193

E-mail: post@digital-sol.co.jp

Website: www.digital-sol.co.jp



NEiNastran *for Windows*
From Noran Engineering, Inc.