



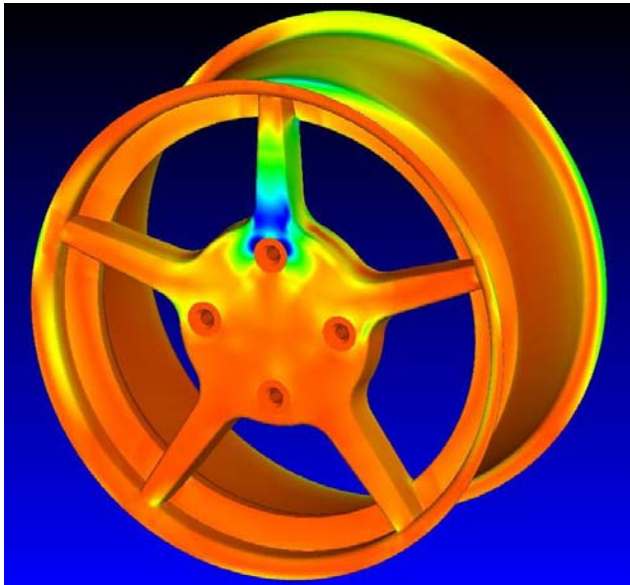
Automotive Case Study (Jayhawk Motorsports of the University of Kansas – Composites Wheel Design)



Jayhawk Motorsports of the University of Kansas, an established Formula SAE team, has designed composite wheels for their car using NEi Software analysis software. The fully composite wheel weighs 2.5lbs, a savings of 5lbs per wheel over the previous aluminum design. Along with the reduction of overall vehicle weight, unsprung weight of the vehicle has dropped by 20% as well as a yaw moment decrease of 6%.

The main features of the composite wheels include a completely hollow center and spoke along with secondarily bonded metallic inserts. Toughened epoxy resin prepreg carbon fiber was used for manufacturing allowing the team to produce the wheels completely in house.

Jayhawk Motorsports has benefited from the use of NEi Software finite element analysis packages throughout the wheel design. Software support of composites allowed the team to optimize ply sequences and orientations. Automatic contact recognition and creation significantly decreased finite element modeling time. Less time was necessary to learn the software packages due to great help archives, technical support and the intuitive user interfaces.



NEi Software, Inc. is aggressively focused on commitment to the customer. Detailed documentation, customized on-site training, and comprehensive technical support ensures that you will see immediate return on your investment.

For more information about our company or our products, please contact:

Headquarters:

NEi Software, Inc.

5555 Garden Grove Blvd., Suite 300

Westminster, CA 92683-1886

USA

Phone: +1.714.899.1220

Fax: +1.714.899.1369

Email: info@neisoftware.com

Website: www.NEiSoftware.com

Europe:

NEi Software EMEA Office

The Old Barrel Store

Draymans Lane, Marlow

Buckinghamshire, SL7 2FF

United Kingdom

Phone: +44.0.1628.400.645

Fax: +44.0.1628.891.701

E-mail: emea@neisoftware.com

Website: www.NEiSoftware.com/emea

Asia:

NEi Software Asia Office

Shinjuku Park Tower

N30th Floor 3-7-1 Nishi-Shinjuku

Shinjuku-ku, Tokyo, 163-1030

Japan

Phone: +81.03.5326.3062

Fax: +81.03.5326.3001

E-mail: asia@neisoftware.com



NEi Nastran *for Windows*
From NEi Software, Inc.