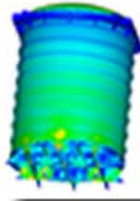


do you need more...

speed

NE/Nastran V8.1 adds one of the **fastest iterative solvers** available today for linear and nonlinear solutions. The PCGLSS solver is 10-20 times faster than typical sparse direct solvers. It requires considerably less memory and can handle models with over **2 million** degrees of freedom using **any** combination of element types.



PLUS:

- True surface to surface contact
- A new NE/Nastran editor
- A new job queuing system, users can run multiple jobs in series or parallel
- A new line search algorithm reduces nonlinear analysis time up to 25%

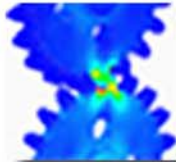
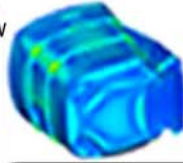
do you need more...

support



New **.OP2**
interface

Already using **Hypermesh(R)** or **Patran(R)**? NE/Nastran now powers your results with speed and accuracy.



Now go DIRECT from **Pro/E(R)** to NE/Nastran using the new .OP2 interface.

FEMAP(R) users get a true 3D surface-to-surface contact and non-linear cable element interface.

then you need...

NE/Nastran v8.1
for Windows

Noran Engineering, Inc. announces the release of NE/Nastran V8.1, the latest upgrade of it's powerful, affordable, and easy-to-use finite element analysis (FEA) tool for engineers in practically all disciplines.



Noran Engineering, Inc
www.NENastran.com
Toll Free: 877-NENastran
Phone: (714)899-1220

©2001 NE, Noran Engineering, Inc. NENE, and NE logo are Registered Trademarks of Noran Engineering, Inc. NASTRAN is a registered trademark of the National Aeronautics and Space Administration. Windows is a registered trademark of the Microsoft Corporation. All other trademarks and registered trademarks are the property of their respective owners.

W
W
W
·
N
E
N
a
s
t
r
a
n
·
c
o
m

1
·
8
7
7
·
N
E
N
a
s
t
r
a
n