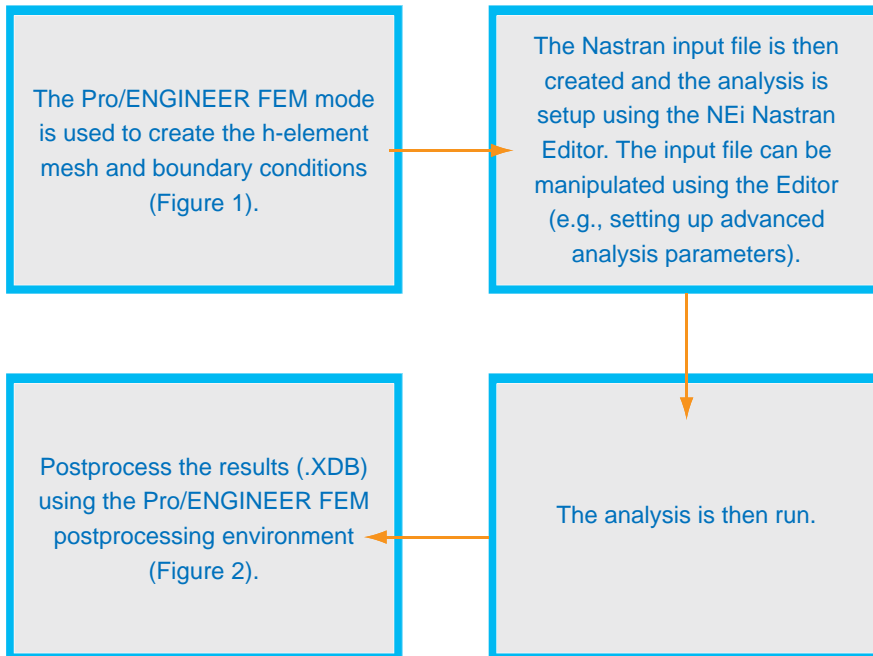


Figure 1: Finite element mesh created by using the Pro/ENGINEER FEM Mode.

A seamless integration of NEi Nastran and Pro/ENGINEER is now available from NEi Software

NEi Nastran provides a seamless integration with Pro/ENGINEER through the “FEM Mode” of Pro/ENGINEER's Advanced Structural package. Using this mode designers can access the advanced simulation capabilities of NEi Nastran such as metal plasticity, surface contact, nonlinear buckling and postbuckling, transient dynamics, shock, etc. The user does not have to leave the familiar Pro/ENGINEER environment. Both the preparation of the finite element model and the postprocessing of the results can be performed inside of Pro/ENGINEER.

The typical workflow is as follows:



Alternatively, the powerful NEi Nastran Editor may be used for the postprocessing (Figure 3).

User benefits include:

- ✓ Easy access to NEi Nastran FEA technology
- ✓ No need to learn finite element specific pre/postprocessing software
- ✓ No CAD conversion issues
- ✓ Ability to provide industry-standard Nastran models and results to design partners, customers, and vendors

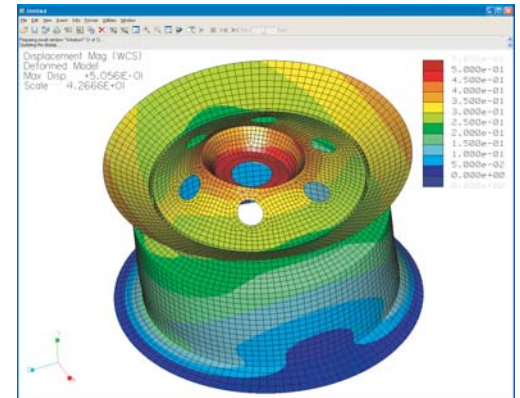


Figure 2: Postprocessing the analysis results within Pro/ENGINEER

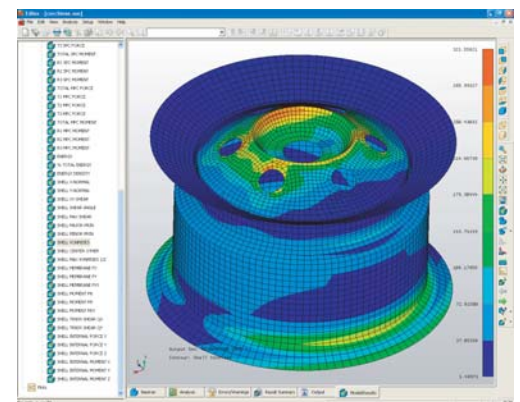


Figure 3: Postprocessing the analysis results within the NEi Nastran Editor