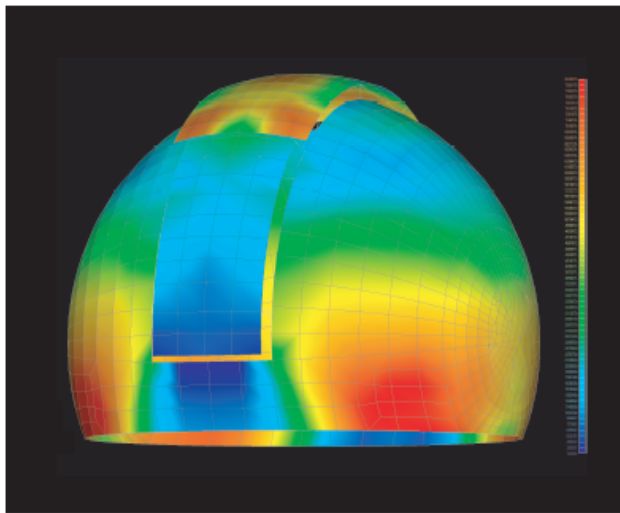


## Civil Case Study (SOAR Observatory)



SOAR Observatory – Cerro Pachon, Chile



NEi Nastran FEA Model – Dome & Shutter Assembly

The Southern Astrophysical Research (SOAR) Telescope is a 4.2-meter, clear-aperture optical/IR telescope on Cerro Pachon in the Chilean Andes. Completed in July of 2002, the \$28 million dollar telescope produces images that rival the clarity of the Hubble Space Telescope. The SOAR telescope dome is a \$2 million dollar, 66-foot diameter, weatherproof structure weighing over 70 tons. The dome consists of an internal steel frame covered with lightweight glass composite panels, an over-the-top nesting shutter system, rotational friction drive, and overhead crane.

The primary objective of the SOAR project: build a high quality, low cost telescope facility. The challenge facing engineers: design a domed enclosure that would be simple to implement, fabricate, and integrate on-site. To protect the sensitive instruments inside, the dome had to withstand a variety of internal external loadings, including severe wind and ice conditions. The dome, shutter, and windscreen must also precisely “track” the telescope’s movements and maintain a 5-meter square clear aperture around the line-of-sight. NEi Nastran was chosen to perform the finite element analysis of the entire internal structure and composite dome panels.

NEi Nastran was used to verify the overall structural adequacy of the dome under critical load conditions including wind, snow, and ice. The internal steel frame and composite exterior panels were modeled together in NEi Nastran to take advantage of the substantial stiffening the panels provide. Structural deflections, stresses, and member loads were studied under both static conditions and the load path variations found during dome rotation. NEi Nastran was also used to determine interlaminar shear stress, stiffness, and laminate failure indices of the panels themselves.

NEi Nastran completely verified the structural integrity of the composite dome and internal frame under a variety of critical structural and environment load conditions. Critical members were re-sized based on worst-case deflection results from the NEi Nastran analysis. Conclusion: the primary frame and exterior panels could withstand the various loads generated by and on the dome, while maintaining deflections within an acceptable range. NEi Nastran delivered a precise, accurate, and cost-effective solution to this critical scientific design challenge.

**NEi Software, Inc.** is aggressively focused on commitment to the customer. Detailed documentation, customized on-site training, and comprehensive technical support ensures that you will see immediate return on your investment.

**For more information about our company or our products, please contact:**

**Headquarters:**

**NEi Software, Inc.**

5555 Garden Grove Blvd., Suite 300

Westminster, CA 92683-1886

USA

Phone: +1.714.899.1220

Fax: +1.714.899.1369

Email: [info@neisoftware.com](mailto:info@neisoftware.com)

Website: [www.NEiSoftware.com](http://www.NEiSoftware.com)

**Europe:**

**NEi Software EMEA Office**

The Old Barrel Store

Draymans Lane, Marlow

Buckinghamshire, SL7 2FF

United Kingdom

Phone: +44.0.1628.400.645

Fax: +44.0.1628.891.701

E-mail: [emea@neisoftware.com](mailto:emea@neisoftware.com)

Website: [www.NEiSoftware.com/emea](http://www.NEiSoftware.com/emea)

**Asia:**

**NEi Software Asia Office**

Shinjuku Park Tower

N30th Floor 3-7-1 Nishi-Shinjuku

Shinjuku-ku, Tokyo, 163-1030

Japan

Phone: +81.03.5326.3062

Fax: +81.03.5326.3001

E-mail: [asia@neisoftware.com](mailto:asia@neisoftware.com)



NEi Nastran *for Windows*  
From NEi Software, Inc.