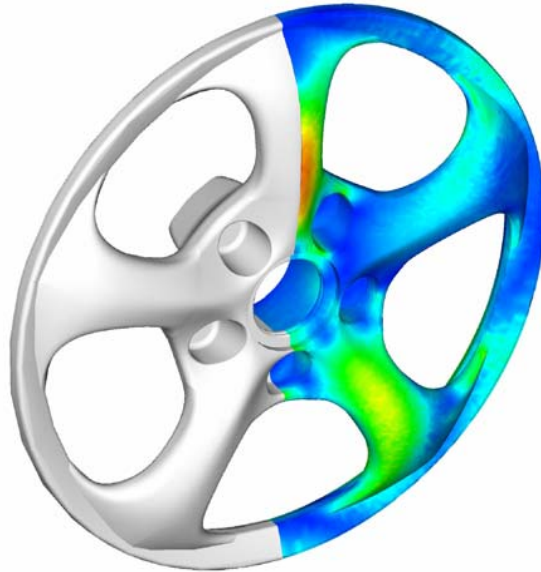




Automotive Case Study (Progressive Engineering Services – Racing Wheel)



Progressive Engineering Services in Bulverde, Texas used NEi Nastran to analyze the design of the center section of a 3 piece high performance wheel, which was custom built for an exotic sports car. Light weight and aggressive, this wheel was designed to handle the abuse of the racetrack. SFI requires the wheel to be able to endure extremely high loads for a relatively short duration of time (100,000 cycles). NEi Nastran was used to analyze the wheel to meet the intense SFI racing specifications. The model of the wheel was developed using approximately 34,000 grid points, 134,000 nodes, and 100,000 degrees of freedom. The contour plot (left) shows the stress on the wheel due to a 3g cornering load.

NEi Software, Inc. is aggressively focused on commitment to the customer. Detailed documentation, customized on-site training, and comprehensive technical support ensures that you will see immediate return on your investment.

For more information about our company or our products, please contact:

Headquarters:

NEi Software, Inc.

5555 Garden Grove Blvd., Suite 300

Westminster, CA 92683-1886

USA

Phone: +1.714.899.1220

Fax: +1.714.899.1369

Email: info@neisoftware.com

Website: www.NEiSoftware.com

Europe:

NEi Software EMEA Office

The Old Barrel Store

Draymans Lane, Marlow

Buckinghamshire, SL7 2FF

United Kingdom

Phone: +44.0.1628.400.645

Fax: +44.0.1628.891.701

E-mail: emea@neisoftware.com

Website: www.NEiSoftware.com/emea

Asia:

NEi Software Asia Office

Shinjuku Park Tower

N30th Floor 3-7-1 Nishi-Shinjuku

Shinjuku-ku, Tokyo, 163-1030

Japan

Phone: +81.03.5326.3062

Fax: +81.03.5326.3001

E-mail: asia@neisoftware.com



NEi Nastran *for Windows*
From NEi Software, Inc.